



BREITLING

1884

AUTOMATIC I

MISE EN SERVICE	Page 2	FRANÇAIS
PARTICULARITÉS	Page 3	
ENTRETIEN	Page 4	
PREPARING THE WATCH FOR USE.....	Page 5	ENGLISH
SPECIAL FEATURES	Page 6	
MAINTENANCE.....	Page 7	
INBETRIEBNAHME	Seite 8	DEUTSCH
BESONDERE MERKMALE	Seite 9	
WARTUNG.....	Seite 10	
MESSA IN FUNZIONE	Pag. 11	ITALIANO
PARTICOLARITÀ	Pag. 12	
MANUTENZIONE.....	Pag. 13	
INSTRUCCIONES DE FUNCIONAMIENTO	Página 14	ESPAÑOL
PARTICULARIDADES	Página 15	
MANTENIMIENTO	Página 16	
INSTRUÇÕES DE FUNCIONAMENTO.....	Página 17	PORTUGUÊS
PARTICULARIDADES	Página 18	
MANUTENÇÃO	Página 19	
ご使用の準備	20 ページ	日本語
特徴	21 ページ	
お手入れと修理	22 ページ	

PREPARING THE WATCH FOR USE

WINDING – DATE ADJUSTMENT – TIME SETTING

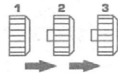
1. To wind the watch, rotate the crown (in position 1) clockwise about 40 times.



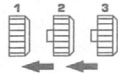
2. Pull the crown out to position 2 and set the calendar to the date immediately preceding the correct date.



3. With the crown pulled out to position 3, rotate the hands until the correct date "jumps" at midnight. Then set the hour and minute hands to the correct time. To synchronize the seconds hand, push the crown back to position 2 at the time signal.



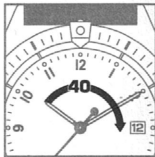
4. Push the crown back into position 1.



SPECIAL FEATURES

A POWER RESERVE

The watch's selfwinding movement is wound automatically by the movements of its wearer's forearm. If worn regularly, it will provide a power reserve in excess of 40 hours. If it is not worn for a number of days, it should be rewound as per point 1 above.



B IMPORTANT NOTE

As with every mechanical watch so equipped, the date calendar is actioned by a complex mechanism that is triggered between 8 p.m. and 2 a.m. It is important to avoid any calendar setting operation and any backward movement of the watch hands during this period.



MAINTENANCE

Remember always to rinse your watch and its metal bracelet in fresh water after its every exposure to seawater. BREITLING leather watch straps are made from choice materials. To prevent them ageing prematurely, immersion is not recommended.

Any repair or other operation carried out on your BREITLING wristwatch must be effected by an official BREITLING repair center or an authorized BREITLING dealer. Should any repair be needed while the Warranty is in force, you must present the BREITLING International Warranty Card duly dated and signed by the vendor at the time of purchase.